

**Werynrjochting**  
fan it

# STEDHÛS

# DOKKUM



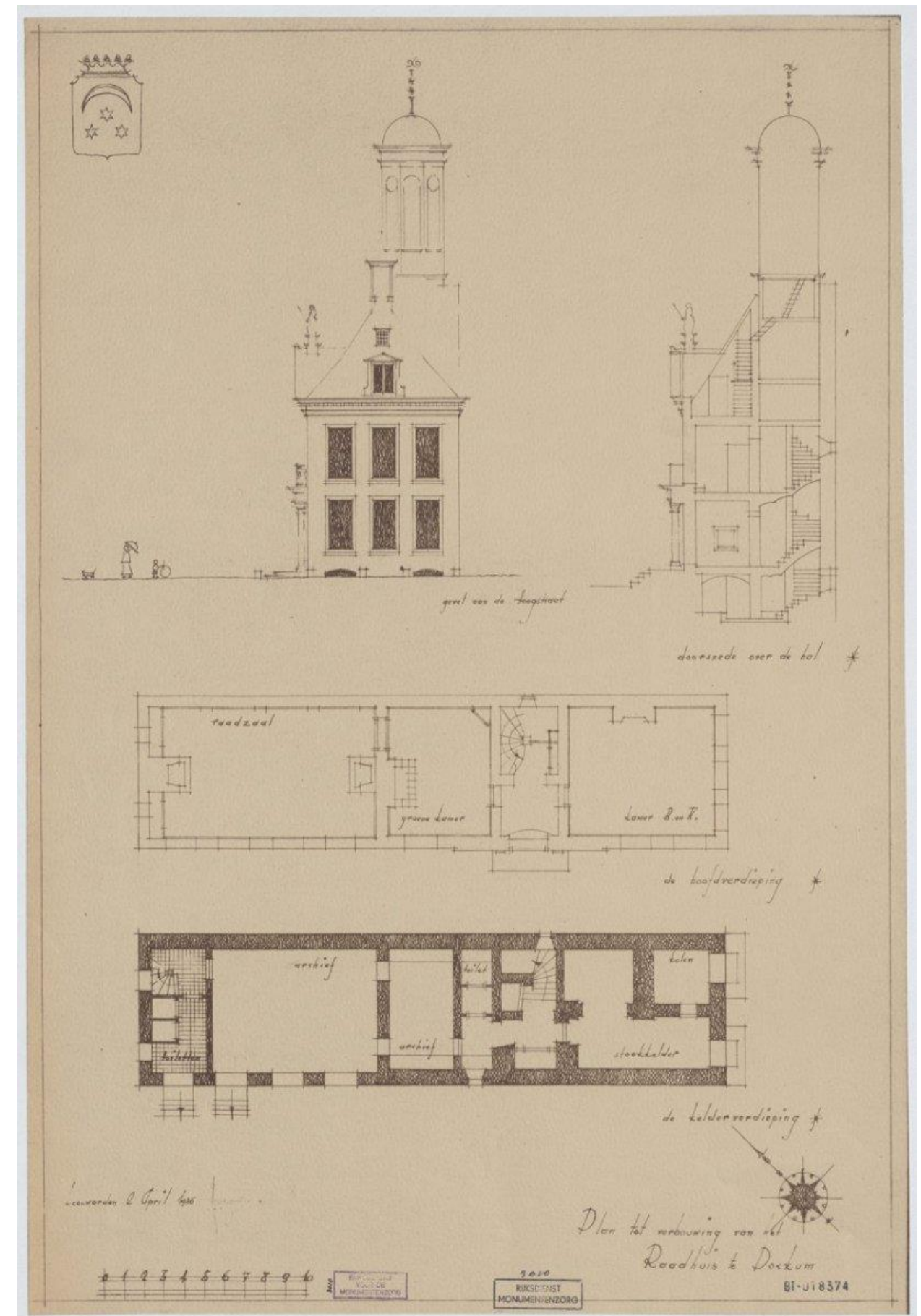
Adema Architecten

Foto: Timo Tijhof

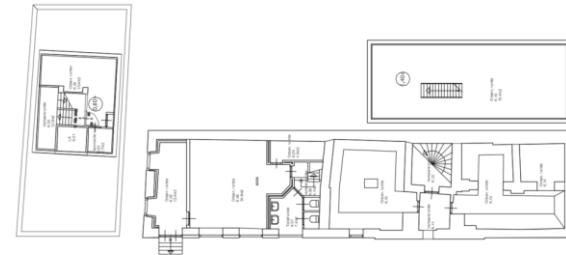


# Stadhuis Dokkum: inhoud

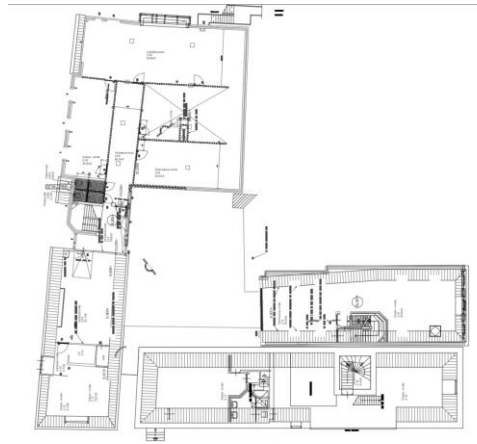
- Bestaande toestand: Vegter 1939
- Huidige plattegronden
- Concept plan
- Uitwerking plattegronden



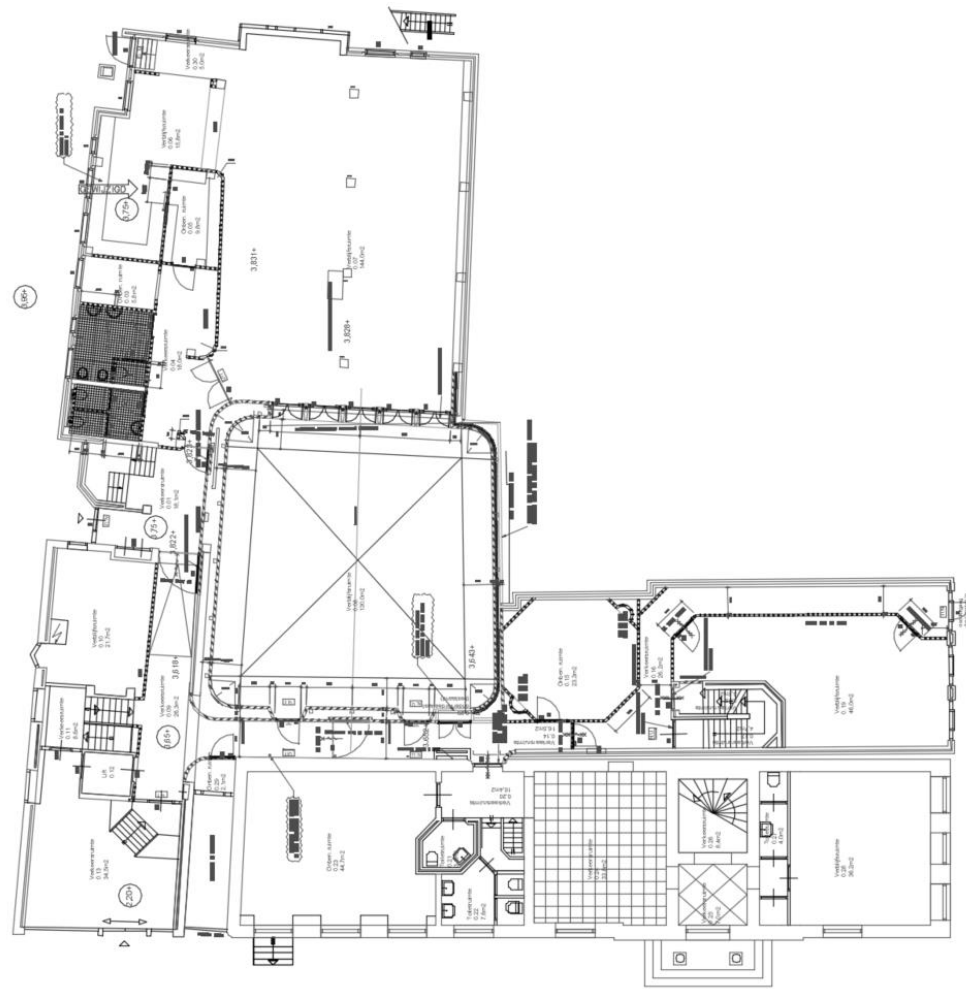
# Stadhuis Dokkum: bestaande plattegronden



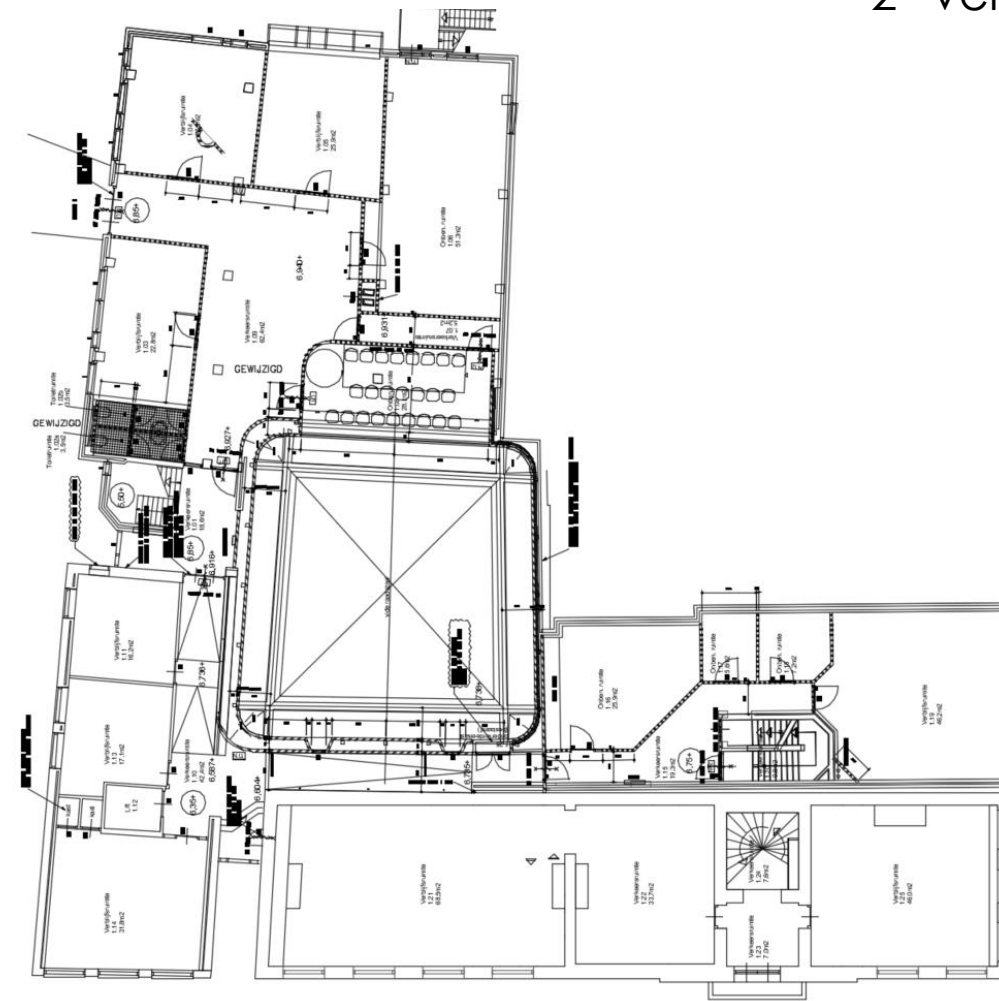
Kelder



2<sup>e</sup> verdieping



Begane grond

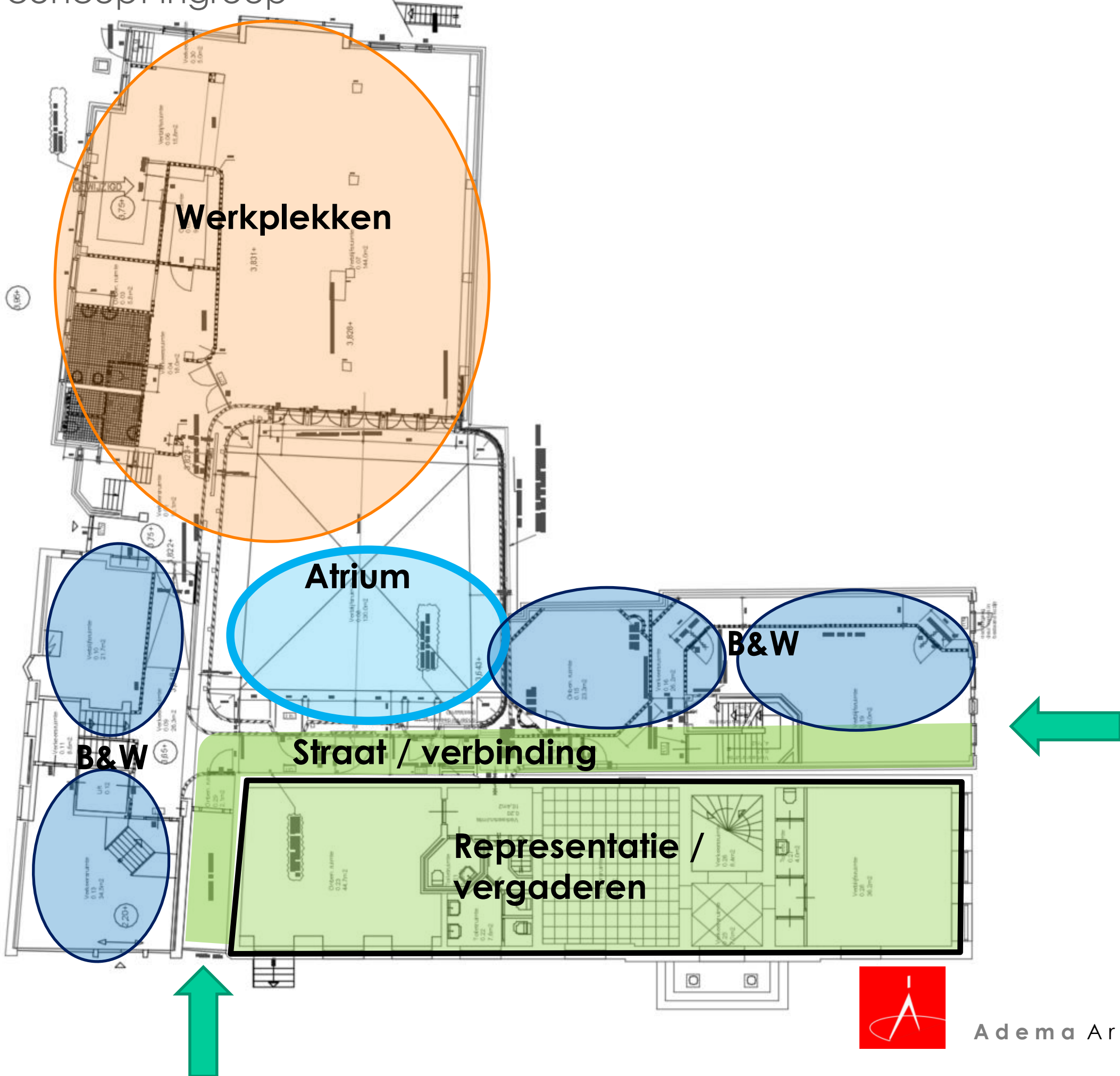


Verdieping





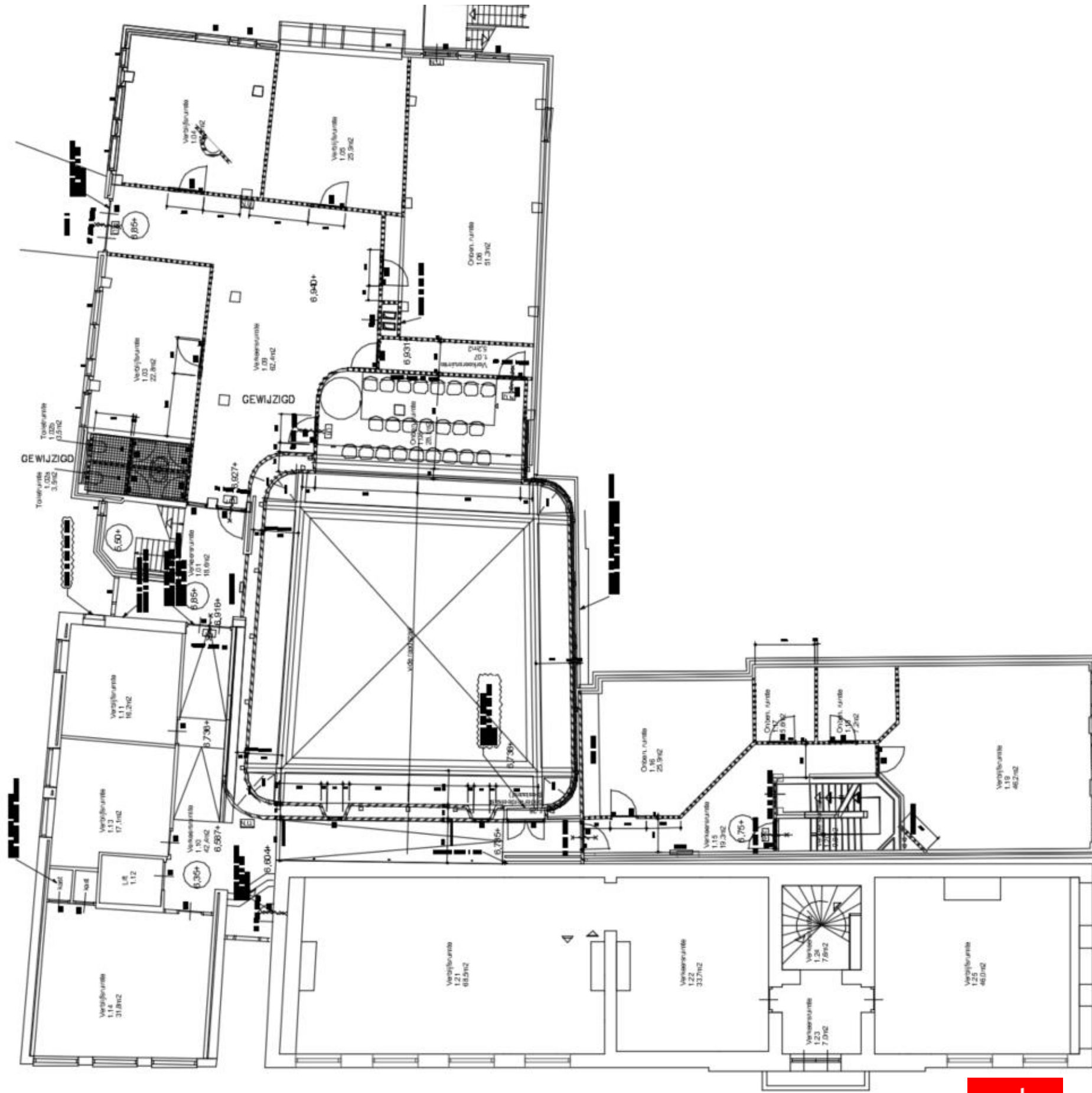
# Stadhuis Dokkum: concept ingreep

















Adema Architecten  
Adema Architecten





Blauwverversstraat

Oudemanssteeg

De Zijl

Lange Oos

De Zijl



Adema Architecten



**Werynrjochting**

fan it

**STEDHÛS**

**DOKKUM**



**Adema Architecten**

Vleesmarkt 7  
9101 MH Dokkum  
T (0519) 29 56 65

Oosterkade 1  
9711 RS Groningen  
T (050) 207 31 41

IJsselkade 60  
8261 AH Kampen  
T (0519) 29 56 65

[info@adema-architecten.nl](mailto:info@adema-architecten.nl)  
[www.adema-architecten.nl](http://www.adema-architecten.nl)

**Adema Architecten**